

Pierre de

Manchicourt

O Virgo virginum

ATTBarBB

O Virgo virginum, quomodo fiet istud?
Quia nec primam similem visa es nec habere sequentem.
Filiae Jerusalem, quid me admiramini?
Divinum est mysterium hoc quod cernitis.

O Virgin of virgins, how shall this be?
For neither before thee was any like thee, nor shall there be after.
Daughters of Jerusalem, why marvel ye at me?
The thing which ye behold is a divine mystery.

Source:

Liber septimus...
Paris: Attaignant, 1534
RISM 1534/9

Transcribed and edited by Francis Bevan

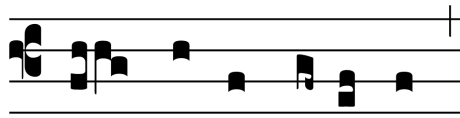
October 2015

High clefs transposed down a fourth.
Accidentals above noteheads are editorial - all others present in source.
Brackets above notes denote original ligatures.

50.2 VI: is a tone higher in source.

112 II: second half of the ligature is dotted in source - presumed misprint.

O



Virgo virgi-num

Pierre de MANCHICOURT

(c.1510-1564)

Primus superius
(Alto)

Contratenor
(Tenor I)

[Primus] tenoris
(Tenor II)

Secundus tenoris
(Baritone)

Canon in sub
diapenthe
(Bass I)

Bassus
(Bass II)

Quo - - - -

Quo - - - - mo -

3

Quo - - - -

- mo - do fi - et i - - stud, quo - -

Quo - - - - mo - do fi -

-do fi - - - et i - - - -

7

mo - do fi - et i - - - - -

mo - do fi - et i - - - - -

Quo - - - - - mo -

et i - - - - - stud, quo -

Quo - - - - - mo -

et i - - - - - stud, quo -

stud, fi - - - - - et

11

stud? - - - - -

stud? - - - - -

do fi - - - - - et i - - - - - stud? - - - - -

mo - do fi - - - - - et i - - - - -

Quo - - - - - mo - do

i - - - - -

15

Qui - a nec pri - - -
Qui - a nec pri - - -
- - - - - stud? Qui -
fi - - - et - - - i - - - stud?
- - - - - stud?

19

mam si - - - - -
- - - mam - - - si - mi - - - - -
Qui - - - - a -
- a nec pri - - - - -
Qui - - - - a nec pri - - - - mam si -

22

mi - lem, si - - - - -
 - - - - - lem, qui - a nec pri - - - - - mam si -
 - - - - - nec pri - mam si - mi -
 - - - - - mam si - - - - - mi - lem, - - - - - qui -
 - - - - - Qui - - - - - a - - - - -
 - - - - - mi - - - - - lem,

26

- - - - - mi - lem - - - - -
 - - - - - mi - lem, nec pri - mam si - - - - -
 - - - - - lem - - - - -
 - - - - - a nec pri - - - - -
 - - - - - nec pri - mam - - - - - si - mi - - - - -
 - - - - - qui - a nec pri - - - - -

30

vi - - - - -

mi - -

vi - - sa

mam si - - mi - lem vi - sa

- lem

mam si - - - - mi - lem vi -

Detailed description: This system contains measures 30 through 33. It features a vocal line and a piano accompaniment. The vocal line starts with a whole note 'vi' in measure 30, followed by rests. In measure 31, it has a whole note 'mi'. Measure 32 has a whole note 'vi' and a half note 'sa'. Measure 33 has a whole note 'mama' and a half note 'si'. The piano accompaniment consists of a right hand and a left hand. The right hand has a treble clef and a key signature of one sharp (F#). The left hand has a bass clef and a key signature of one flat (Bb). The piano part includes various rhythmic patterns, including eighth notes and quarter notes, with some measures containing rests.

34

- - - sa es, vi - - -

lem vi - - - - -

es

es, qui -

vi - - - sa

- - - - - sa

Detailed description: This system contains measures 34 through 37. The vocal line continues with a whole note 'sa' and a half note 'es' in measure 34, followed by rests. In measure 35, it has a whole note 'lem' and a half note 'vi'. Measure 36 has a whole note 'es' and a half note 'qui'. Measure 37 has a whole note 'vi' and a half note 'sa'. The piano accompaniment continues with similar rhythmic patterns, including a triplet of eighth notes in measure 35. The right hand has a treble clef and a key signature of one sharp (F#). The left hand has a bass clef and a key signature of one flat (Bb).

38

-sa es, vi - - - - - a nec pri - mam si - mi - es es, vi - - - - - sa es nec

42

- sa es nec ha - - be - - - - - sa es nec ha - be - - - - - re - - - - - lem vi - - sa es nec ha - be - re - - - - - se - quen - - - - -

46

#

- re se - quen - tem. Fi - li -

nec ha - be - re se - quen - tem.

se - - - quen - - - - tem.

ha - - - - be - re. se - quen - - - -

nec ha - be - - - - re

- - - - tem, nec ha - be - - - -

50

æ Je - ru - sa - lem, fi - li - æ Je - ru - - - sa - lem, Je -

Fi - - - li - æ Je -

- - - - -

- - - - - tem. Fi -

se - - - - - quen - - - - - tem.

- - - - - re se - quen - tem, se - quen -

54

ru - sa - lem, Je -

ru - sa - lem, Je -

Fi -

- li - æ Je - ru - sa - lem, Fi - li - æ Je -

tem. Fi - li - æ

58

- ru - sa - lem,

ru - li - æ Je - ru -

ru - sa - lem,

Fi -

- Je - ru

62

quid me

sa -

sa - lem,

Je - ru - sa - lem,

li - æ Je - ru - sa - lem, Je - ru -

66

ad - mi - ra - mi - ni,

lem, quid me ad -

quid me ad - mi - ra -

- sa - lem, quid

70

quid me ad - - - mi -
-mi - ra - - - mi - ni, quid
quid me
- mi - - - - - ni, ad - mi - ra - mi -
me ad - - - mi - - - ra - - -

74

ra - - - - -
me ad - mi - ra - mi - ni,
ad - - - mi - ra - - - - mi - - -
ni,
quid me ad -
mi -

78

- mi - ni?

me ad - mi - ra - mi - ni? Di -

ni?

quid me ad - mi - ra - mi - ra - mi - ni?

mi - ra - mi - ni?

ni, ad - mi - ra - mi - ni?

82

Di - vi - num est my - ste - ri - um,

-vi - num est my - ste - ri -

Di -

mi - ni? Di -

ni?

Di -

94

quod cer - ni - tis,

ri - um hoc quod cer - ni -

ste - ri - um

vi - num est my - ste - ri - um

98

ri - um hoc

hoc

tis, hoc

hoc quod cer - ni -

110

ni - - - - - tis,

quod cer - ni - - - - -

hoc quod cer - ni - - - - -

-tis, hoc quod cer - ni - -

- - - - - tis, hoc

- - - - - tis,

114

hoc quod cer - - - - -

-tis, hoc quod cer - ni - - - - -

- - - - - tis,

quod cer - ni - - - - -

hoc quod cer - ni - - - - - tis, hoc

118

ni - - - - - tis.

tis. _____

hoc _____ quod _____ cer - ni - - - - tis.

- - - - - tis.

tis. _____

quod _____ cer - ni - - - - tis.

Detailed description: This page contains musical notation for measures 118 through 121. It features a vocal line and two piano accompaniment staves. The vocal line is in treble clef, and the piano parts are in treble and bass clefs. The lyrics are Latin: 'ni - - - - - tis.', 'tis. _____', 'hoc _____ quod _____ cer - ni - - - - tis.', and 'quod _____ cer - ni - - - - tis.'. The piano accompaniment includes chords and melodic lines, with some notes marked with a flat (b). The score is written in a standard musical notation style with a key signature of one flat and a common time signature.